

orto alresa

Centrifuges and laboratory products

info@ortoalresa.com

www.ortoalresa.com

+34 91 884 40 16



General applications: Centrifuges universal

BIOPROCEN 22 R

BIOPROCEN 22 R

LCD

PCBS



Centrifuges universal: Bioprocen 22 R



IVD CE

Max. capacity: 6 x 50 ml.

Max. speed: 31.865 xg / 18.100 RPM

The bioprocessing requires a versatile centrifuge which cover different types of assays and therefore different configuration for the same centrifuge. The centrifuge Bioprocen 22 R is provided of high-speed rotors for microtubes from 1,5 to 5 ml, as well as 50 ml conical tubes. Its accessories for microplates offer the chance to spin in swing out rotors.

The refrigeration system has been designed for a temperature stability that allow to keep it even at high speed and along the run.

The different options for customization through the software become the centrifuge a tailor-made tool for your lab. Increase your lab output with the new Bioprocen 22 R.

Features

LCD screen:

- Shows RPM and RCF, time, temperature and acceleration/deceleration (PCBS).
- Speed programming in 10 RPM/ 10 xg steps.
- Timer countdown/up from "0" or at "set RPM/ RCF" for reproducible tests.
- Timer from 1 to 99 min. programmable in 5 sec. steps and hold position.
- PCBS: Progressive controlled acceleration and braking system up to 175 selectable ramps that prevents sample homogenization after separation.
- 16 programmable memories.
- Several acoustic and visual messages warning the user the device situation.

Easy to use

- Microprocessor controlled.
- Induction motor maintenance free (brushless).
- Rotors list on memory.
- Noise level: below 60 dB.
- Start, stop, open lid and short spin with adjustable speed buttons.
- Option of free/locked adjustment of RPM/ RCF along the run.
- Low height for easy access.
- Last values remain in memory.
- Automatic rotor recognition. Over-speed protection.

Safety

- Lid provided with security systems:
 - Automatic lid lock system, motorized.
 - Emergency lid-lock release.
 - Locking and protection against opening along the run.
 - Lid dropping protection.
 - Port in the lid for calibration and operation checking.
- Ergonomic design that allows close the lid effortless
- Unbalance detection and switch off.
- Protection safety ring between the centrifugation chamber and the housing.
- Chamber of centrifugation in stainless steel (easy cleaning).
- Rotors can be removed with the lid closed. Hermetic lids.
- Rotors and adapters autoclavable, easy to install by the user.
- Automatic disconnection for energy saving up to 8 h.

Refrigeration

- Remains the refrigeration after centrifugation process.
- Precooling program with rotor spinning and temperature selectable.
- Guarantee 4 °C at maximum RPM.
- Temperature range from -20°C (-4°F) to 40°C (104°F) in 1°C steps.
- Temperature sensor inside the chamber.
- Gas R 449A HFO (CFC free).

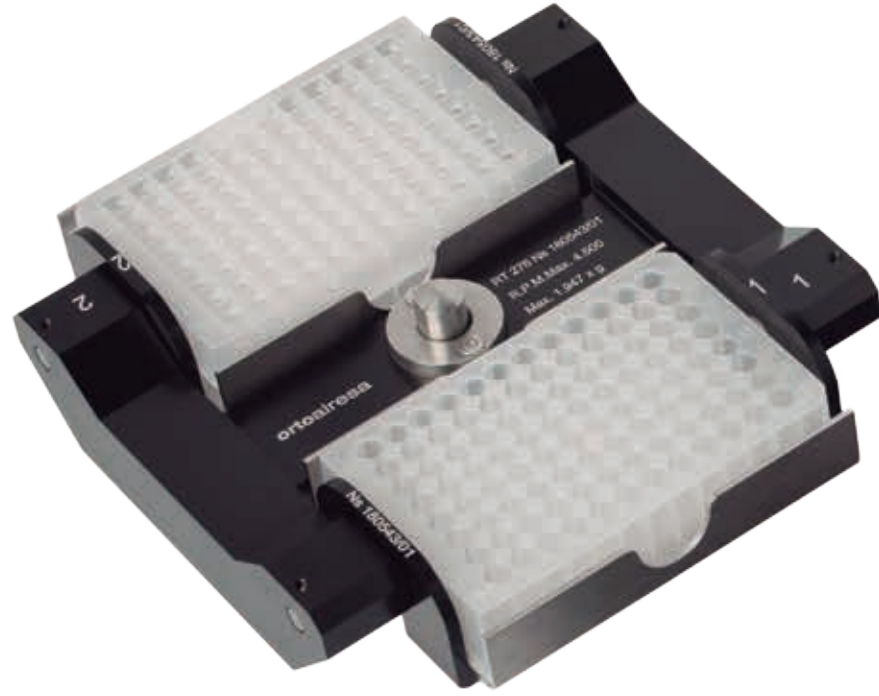
EU Directives: 2011/65/EU, 2012/19/EU, 2014/30/EU, 2014/35/EU, 98/79/EC.

Regulation n°: (EC) 1005/2009, (EU) 517/2014.

Standards: EN 61010-1, EN 61010-2-101, EN 61010-2-020, EN 61326-2-6, EN 61326-1.

Versions

	Dimensions (mm) (w x d x h)			Net weight (Kg)	Voltage (V)	Frecuency (Hz)	Consumption (W)
CE 223	410	690	320	59	220-230	50	540
CE 224	410	690	320	59	110-120	60	700



Accessories

Centrifuge Bioprocen 22 R

		RT 291		RT 274		RT 275		RT 276		RT 306		RT 307		RT 308	
															
ROTOR		ANGLE FIXED 45°		ANGLE FIXED 28°		ANGLE FIXED 45°		SWING OUT 30°		ANGLE FIXED 45°		ANGLE FIXED 45°		ANGLE FIXED 45°	
Max. capacity		12 x 5 ml		6 x 50 ml		30 x 1,5-2 ml.		4/2 microtiter		32 x 0,2 ml		24 x 1,5 - 2 ml.		48 x 1,5 - 2 ml.	
RPM Max.		18.100		8.300		12.000		4.500		18.100		18.100		14.500	
Radius (mm)		87		101		96		86		55		82		95	
RCF Max. (xg)		31.865		7.778		15.445		1.947		20.145		30.034		22.330/19.274	
Min. temp. at max. speed (°C)		3		-3		-3		-5		-1		0		2	
SAMPLE VOLUME	Dim (mm) approx	ADAPTERS		ADAPTERS		ADAPTERS		ADAPTERS		ADAPTERS		ADAPTERS		ADAPTERS	
		Tubes	Ref.	Tubes	Ref.	Tubes	Ref.	Tubes	Ref.	Tubes	Ref.	Tubes	Ref.	Tubes	Ref.
50 ml. (hs)	ø29 x 108	-	-	6	RE 536	-	-	-	-	-	-	-	-	-	-
50 ml. conical	ø29 x 117	-	-	6	RE 536	-	-	-	-	-	-	-	-	-	-
30 ml. / 30 ml. (hs)	ø25 x 98	-	-	6	RE 392	-	-	-	-	-	-	-	-	-	-
25 ml. conical	ø29 x 83	-	-	6	RE 617	-	-	-	-	-	-	-	-	-	-
15 ml.	ø16 x 100	-	-	6	RE 394	-	-	-	-	-	-	-	-	-	-
15 ml. conical	ø17 x 122	-	-	6	RE 394 (3)	-	-	-	-	-	-	-	-	-	-
10 ml.	ø13 x 100	-	-	6	RE 396	-	-	-	-	-	-	-	-	-	-
10 ml. blood sample	ø16 x 107	-	-	6	RE 394	-	-	-	-	-	-	-	-	-	-
10 ml. (hs)	ø16 x 80	-	-	6	RE 395	-	-	-	-	-	-	-	-	-	-
7/10 ml. blood sample	ø13 x 107	-	-	6	RE 396	-	-	-	-	-	-	-	-	-	-
5 ml.	ø13 x 75	-	-	6	RE 397	-	-	-	-	-	-	-	-	-	-
5 ml. conical	ø17 x 60	12	-	-	-	-	-	-	-	-	-	-	-	-	-
5 ml. conical screw cap	ø17 x 60/68	6	-	-	-	-	-	-	-	-	-	-	-	-	-
5 ml. blood sample	ø13 x 82	-	-	6	RE 397	-	-	-	-	-	-	-	-	-	-
Microtubes 1,5 - 2 ml.	ø11 x 42	12	RE 506	18	RE 433	30	-	72	-	-	-	24	-	48	-
Microtubes 0,5 - 0,6 ml.	ø8 x 30	12	RE 507	18	RE 575	30	RE 428	72	RE 580	-	-	24	RE 305	48	RE 358
Microtubes 0,2 - 0,4 ml.	ø6 x 45	12	RE 508	18	RE 576	30	RE 427	72	RE 581	32x0,2	-	24	RE 304	48	RE 357
Cryotubes	ø12,5 x 52	12	RE 537	-	-	-	-	-	-	-	-	-	-	-	-
Microtiter plates: 128x86x15/21 mm	128x86x15/21	-	-	-	-	-	-	4/2	-	-	-	-	-	-	-

(1) Please check tubes features. (2) Allows different configurations depending of the microplates height. (3) Fitting these tubes the rotor can not be closed with the lid.

orto
alresa
About centrifugation

Álvarez Redondo S.A.
Edition: January 2019.
Subject to modifications.

info@ortoalresa.com
www.ortoalresa.com
+34 91 884 40 16

Made in Spain (UE)